

# The Kidney Conundrum:

## Differentiating Lupus Nephritis Flare from Preeclampsia with Severe Features

VANDERBILT  UNIVERSITY  
MEDICAL CENTER

Ashley M. Peotter, MD; John A. Johnson, MD; Holly B. Ende, MD

## BACKGROUND

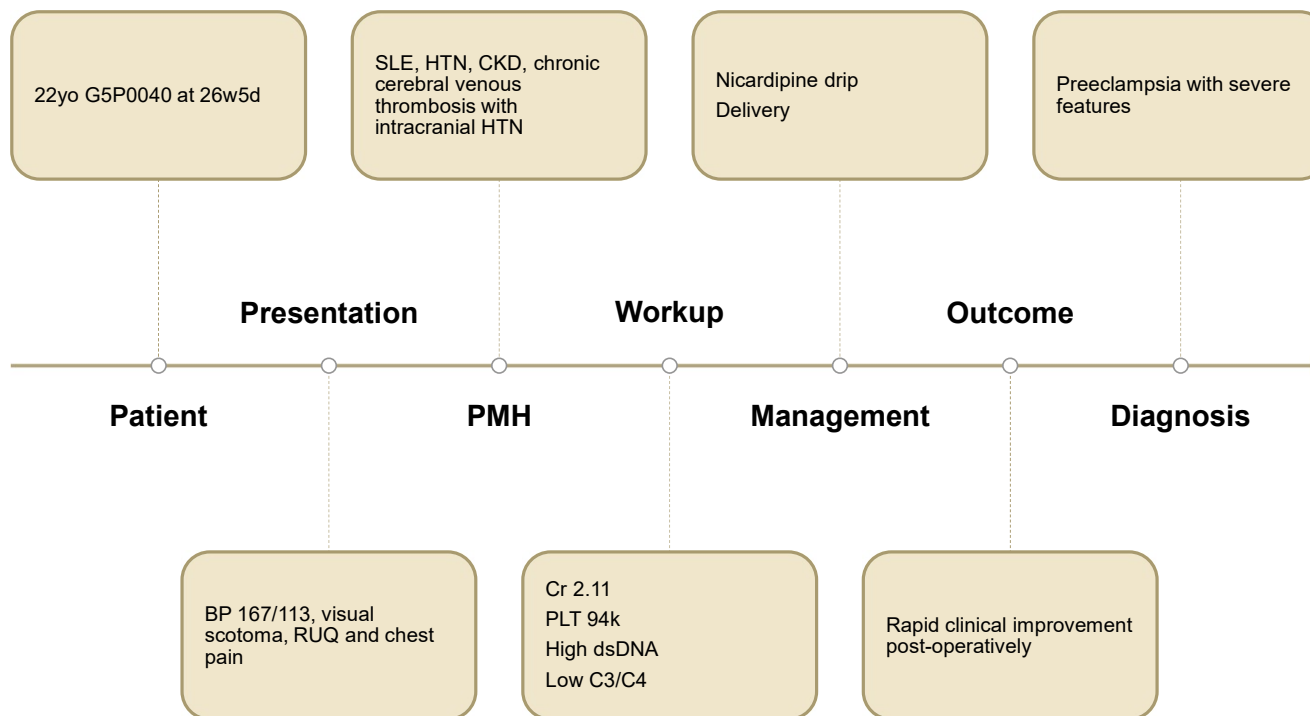
- Systemic lupus erythematosus (SLE) is an autoimmune disease most common in women of reproductive age
- Common manifestations are hypertension and kidney disease in the form of lupus nephritis (LN)
- LN is an immune-complex glomerulonephritis associated with complement activation
- LN can mimic preeclampsia with severe features

# The Kidney Conundrum

Ashley M. Peotter, MD; John A. Johnson, MD; Holly B. Ende, MD

VANDERBILT  UNIVERSITY  
MEDICAL CENTER

## CASE



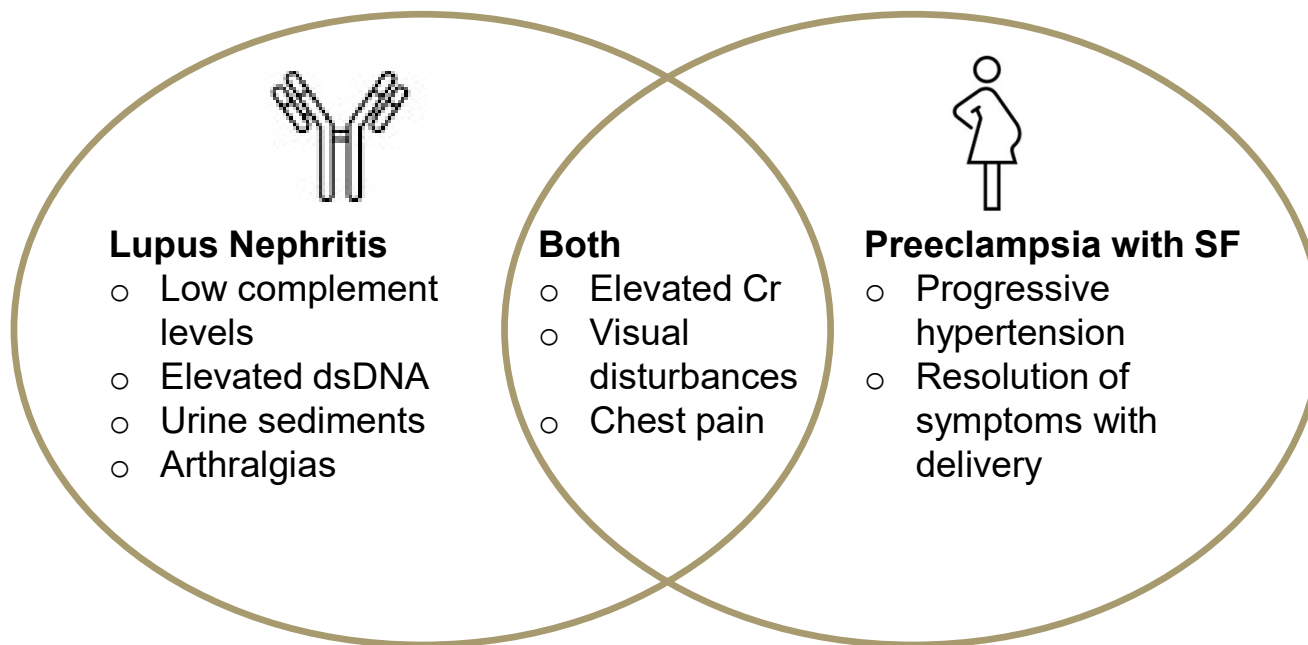
# The Kidney Conundrum

Ashley M. Peotter, MD; John A. Johnson, MD; Holly B. Ende, MD

VANDERBILT UNIVERSITY  
MEDICAL CENTER

## LEARNING POINTS

Pregnancy increases cardiac output, especially in the peripartum period. In patients with SLE, the increased renal blood flow places them at risk of nephrotic syndrome independent of a preeclampsia diagnosis



Wind M, Fierro JJ, Bloemenkamp KWM, de Leeuw K, Lely AT, Limper M, Sueters M, Teng YKO, Walter IJ, Kooiman J. Pregnancy outcome predictors in systemic lupus erythematosus: a systematic review and meta-analysis. *Lancet Rheumatol*. 2024 Oct;6(10):e667-e683. doi: 10.1016/S2665-9913(24)00160-7. Epub 2024 Aug 14. PMID: 39153486.

Tan Y, Yang S, Liu Q, Li Z, Mu R, Qiao J, Cui L. Pregnancy-related complications in systemic lupus erythematosus. *J Autoimmun*. 2022 Oct;132:102864. doi: 10.1016/j.jaut.2022.102864. Epub 2022 Jul 21. PMID: 35872104.