

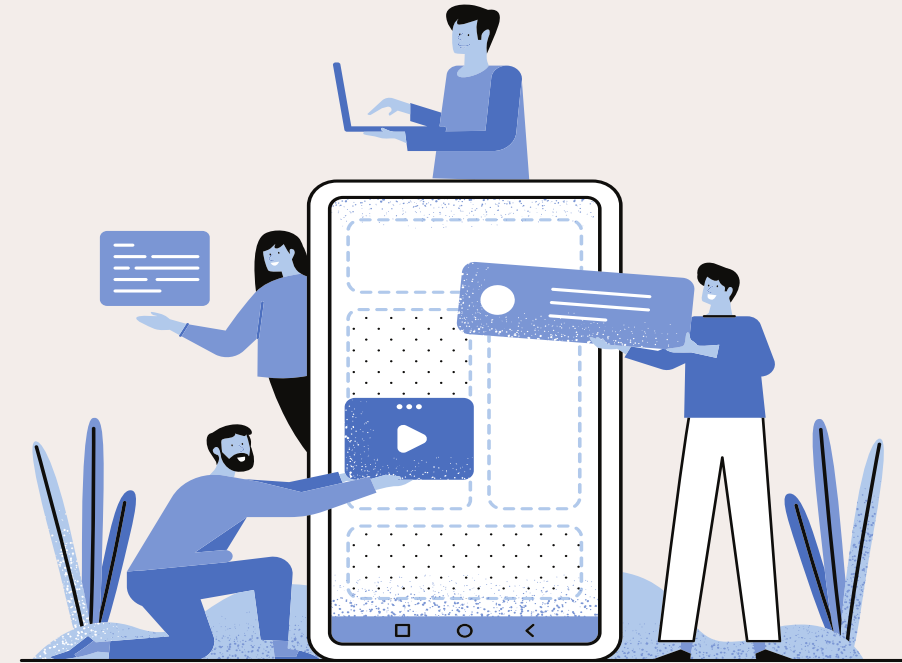
Background

- ACGME and ABMS promoting CBME
- PME for individualized learning
- Online resources vary in quality
- **Hypothesis:** development of a PME recommender system is feasible and will be useful to residents



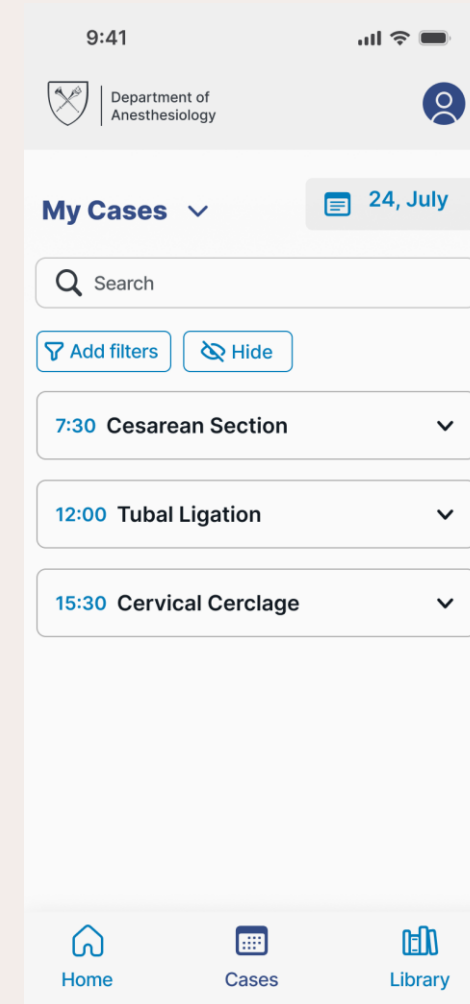
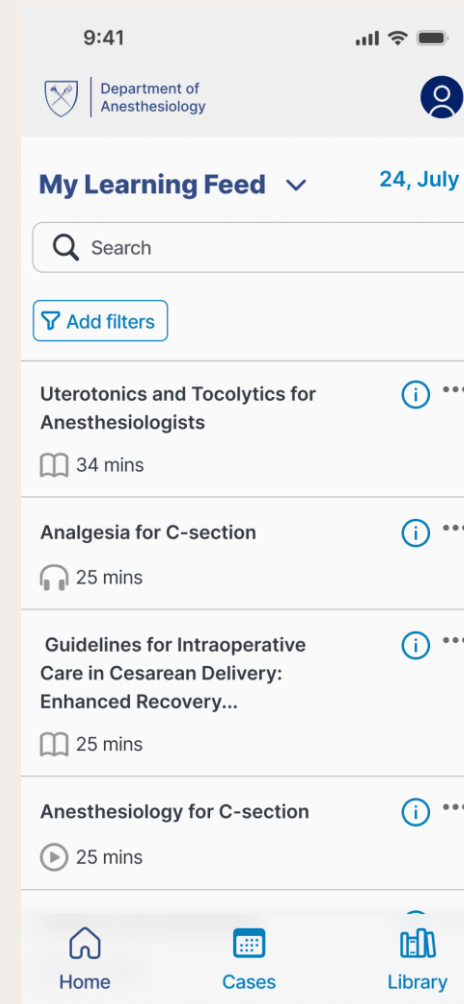
Study Design and Methods

- Multi-institutional collaboration
- Faculty and resident focus groups
- Learner data model (KCE)
- Expertly curated content
- LLM training to map user queries and surgical cases for content recommendation



Results

- Recommendations based on next day cases
- 3200+ curated content items (SOAP contributing)
- App Lite deployed Q3 2025
- Full version Q4 2025



Conclusion and Discussion

